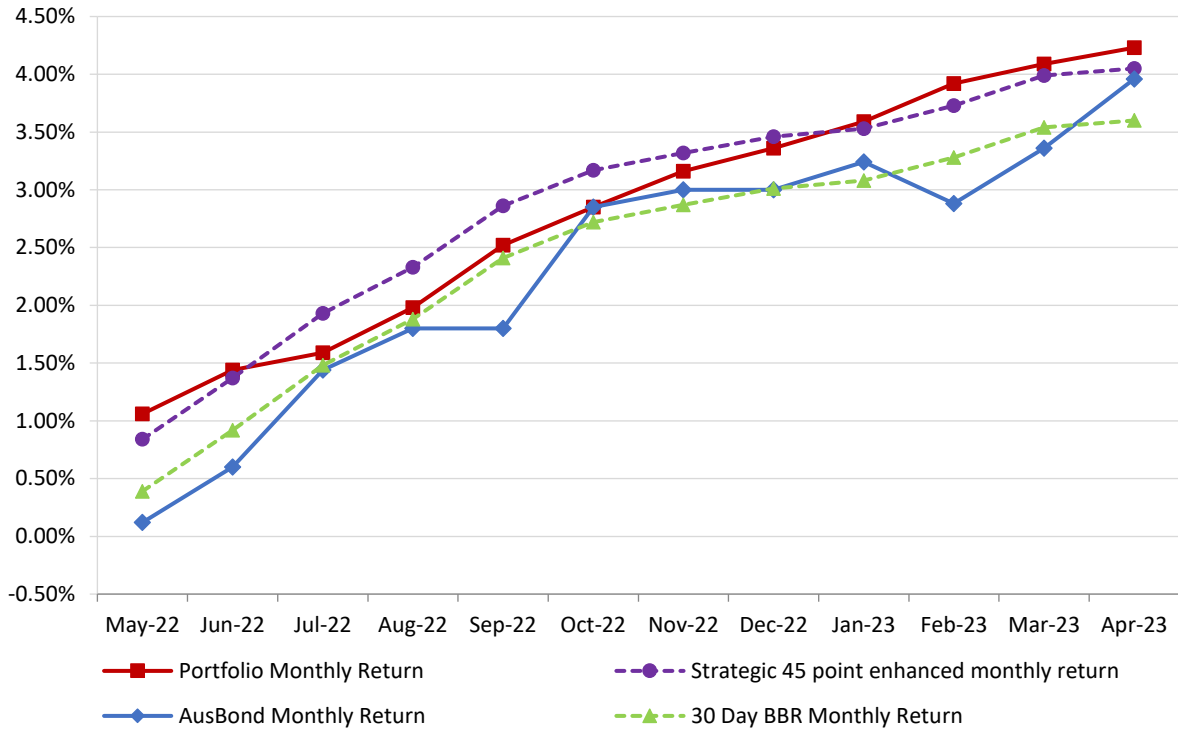


# **Attachment B**

**Investment Performance  
as at 30 April 2023**

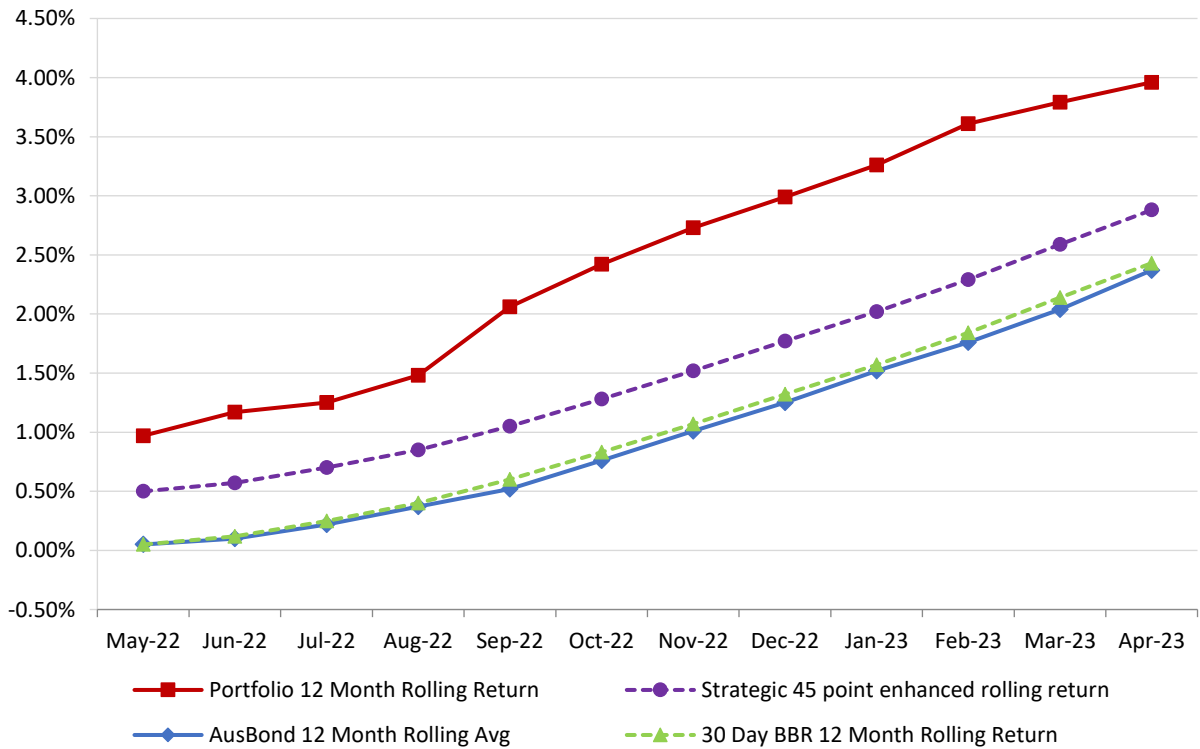
## Monthly Results

Actual Portfolio vs Strategic Enhanced Benchmark vs AusBond Benchmark vs 30 Day BBR Benchmark  
April 2023

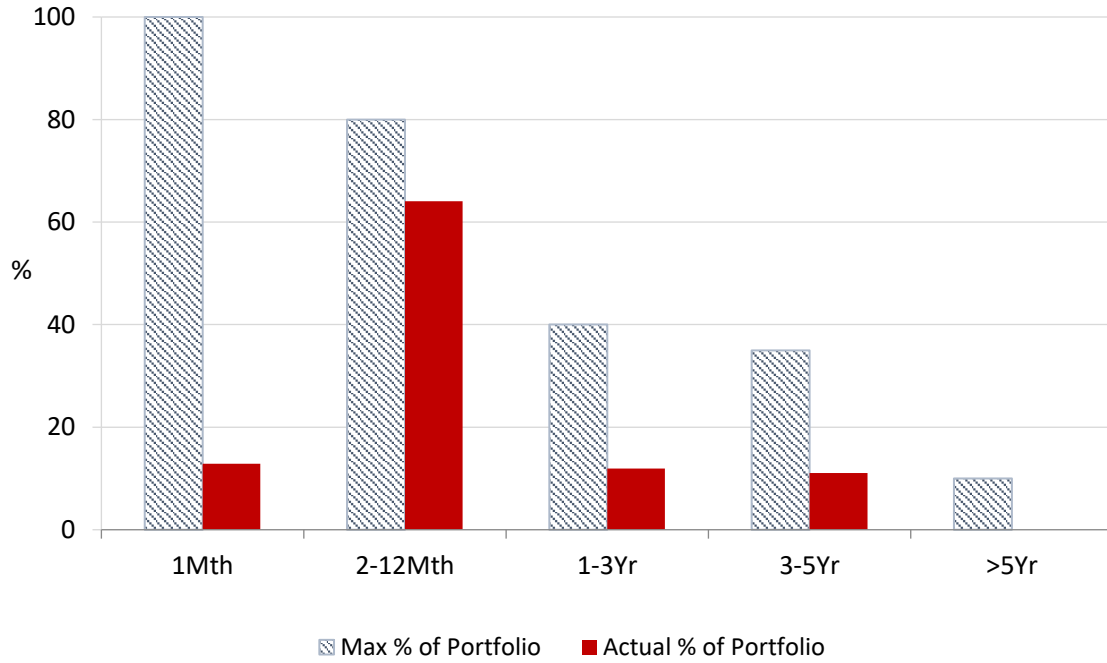


## 12 Month Rolling Averages

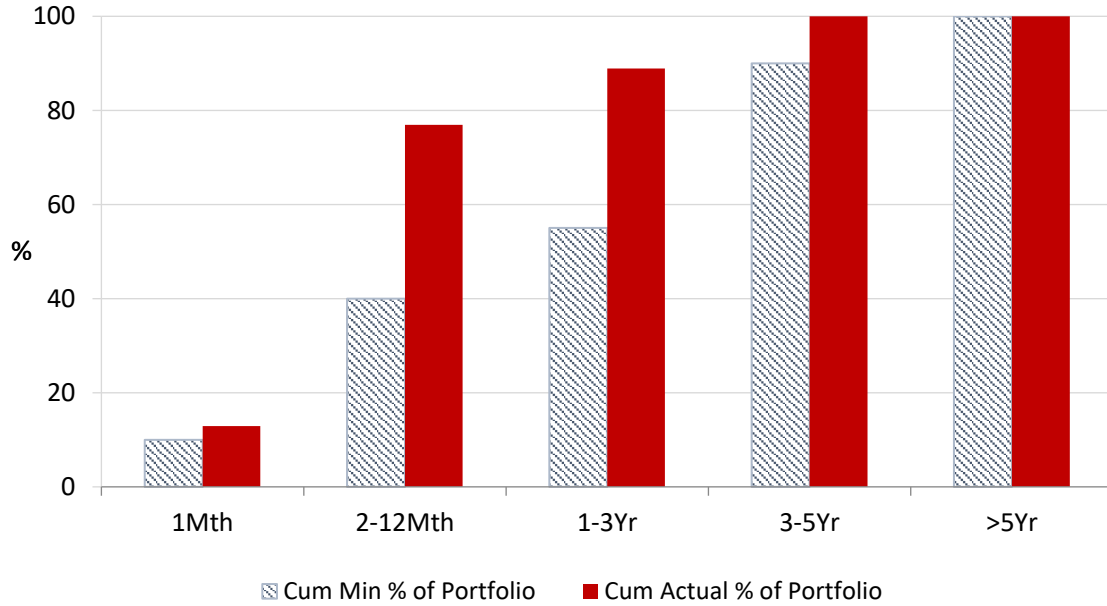
Actual Portfolio vs Strategic Enhanced Benchmark vs AusBond Benchmark vs 30 Day BBR Benchmark  
April 2023



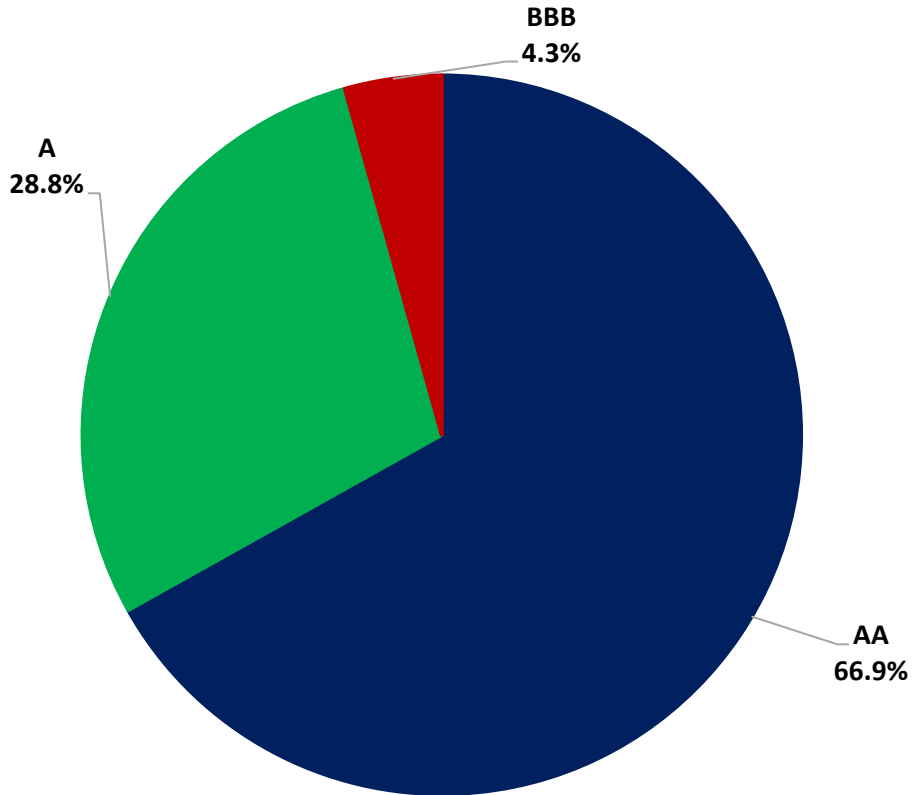
**Portfolio Liquidity - Maximum Allowances as at 30 April 2023**



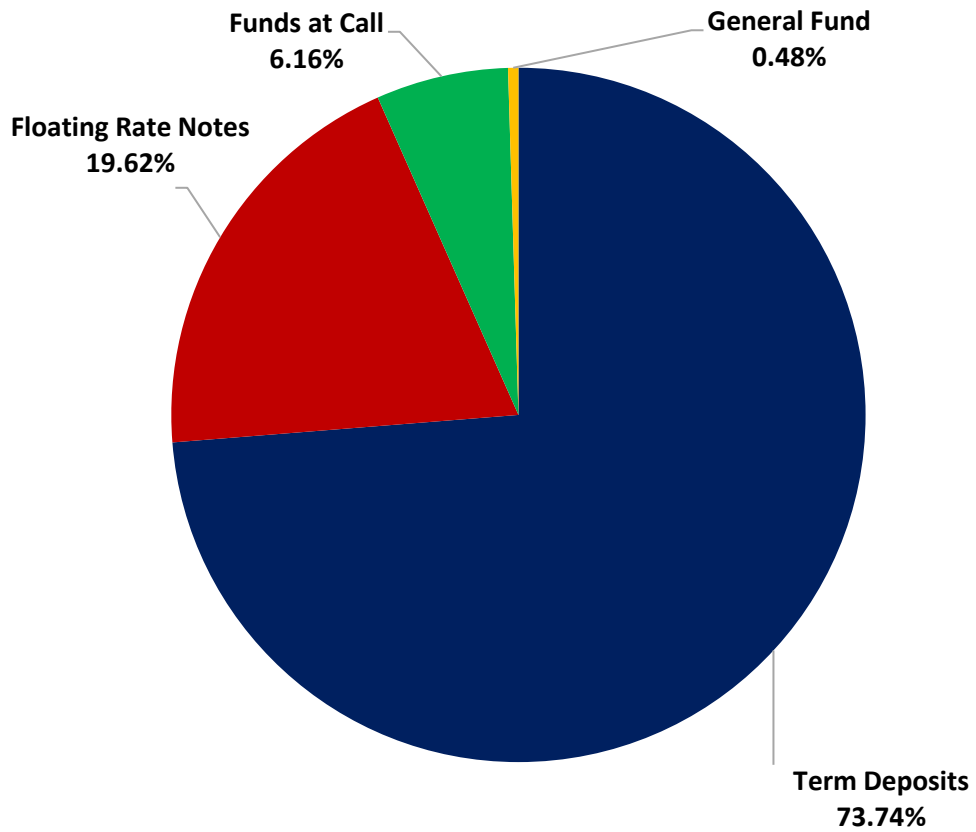
**Portfolio Liquidity - Minimum Allocations as at 30 April 2023**



**Risk Profile as at 30 April 2023**



**Risk Profile as at 30 April 2023**

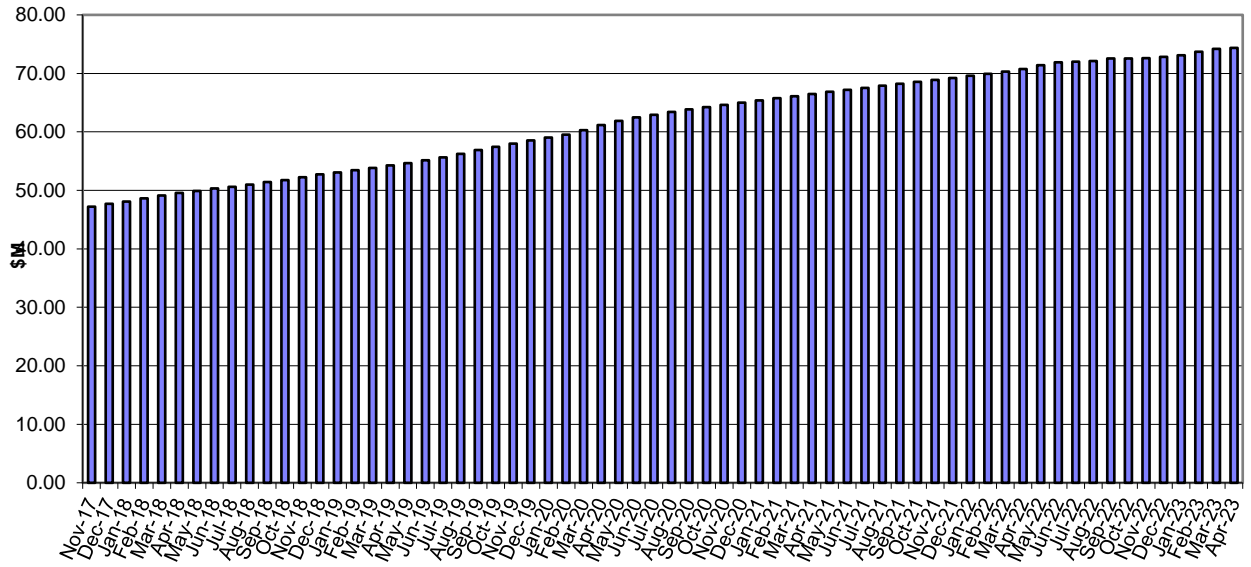


**INVESTMENT AND CASH DISTRIBUTION BY FINANCIAL INSTITUTION**

**as at 30 April 2023**

Institution Category	Financial Institution	Amount \$M	Financial Inst. %	Institution Cat. %
Australian Big 4 Bank (and related institutions)	ANZ Bank	26.0	3.6	
	Commonwealth Bank	201.0	28.0	
	National Aust Bank	63.9	8.9	
	Westpac Banking Corporation	175.4	24.4	
<b>Big 4 Total</b>		<b>466.3</b>		<b>64.9</b>
Other Australian ADIs and Australian subsidiaries of foreign institutions	Bank Australia Limited	10.0	1.4	
	Bank of Queensland	48.0	6.7	
	Bendigo & Adelaide Bank	25.0	3.5	
	Great Southern Bank (formerly Credit Union Australia)	6.5	0.9	
	ING Bank	70.0	9.7	
	Suncorp Bank	66.3	9.2	
	Macquarie Bank Ltd	10.0	1.4	
	Northern Territory Treasury Corporation	9.5	1.3	
Newcastle Permanent Building Society	7.3	1.0		
<b>Other ADI Total</b>		<b>252.5</b>		<b>35.1</b>
<b>Grand Total</b>		<b>718.8</b>	<b>100.0</b>	<b>100.0</b>

### Cumulative Outperformance over AusBond Benchmark - 2016-2022



### Cumulative Outperformance over 30 Day BBR Benchmark - 2016-2022

